

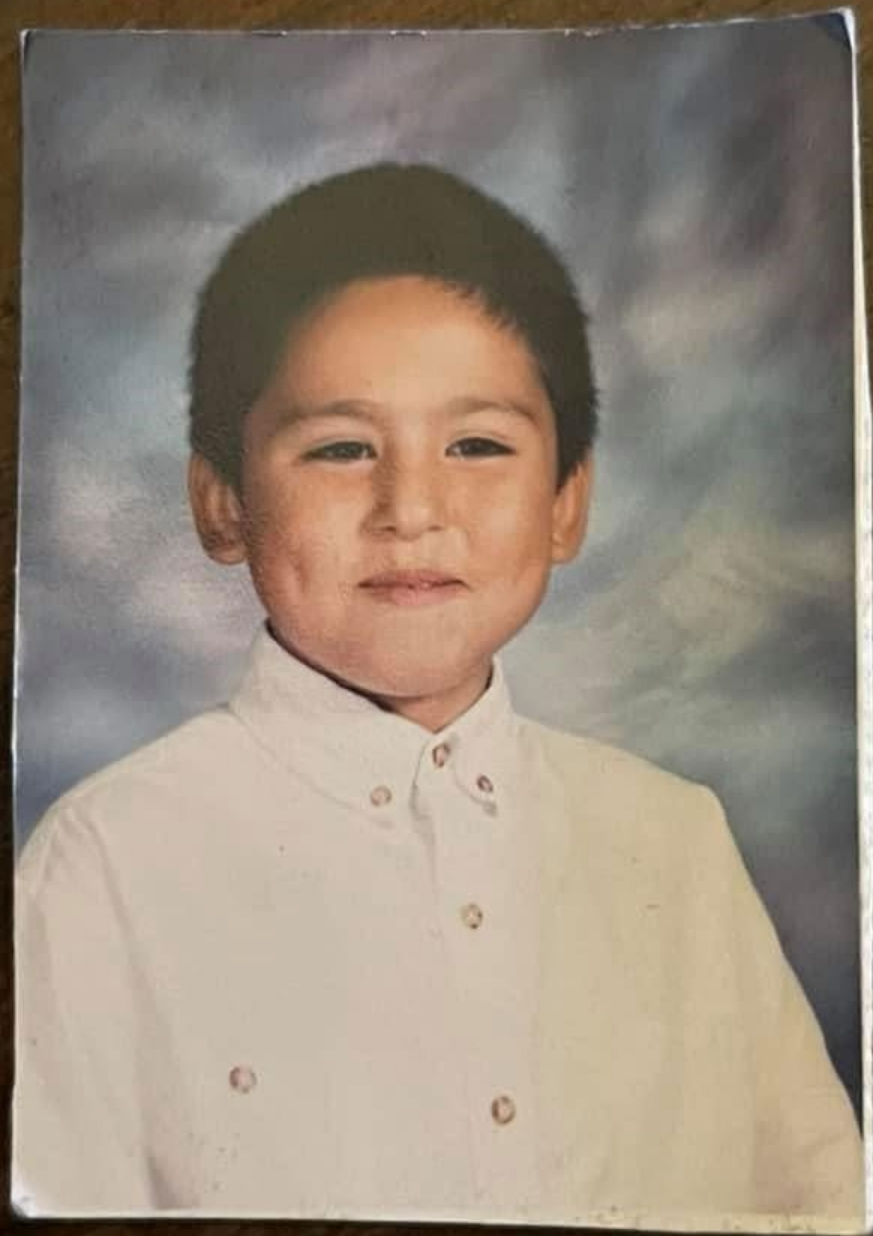
The Opportunity Makers

How a Diverse Group of Public
Schools Help Students Catch
Up —and How Far More Can

EduSkills
July 31, 2025



Why do you serve
multilingual learners and
English learner communities?





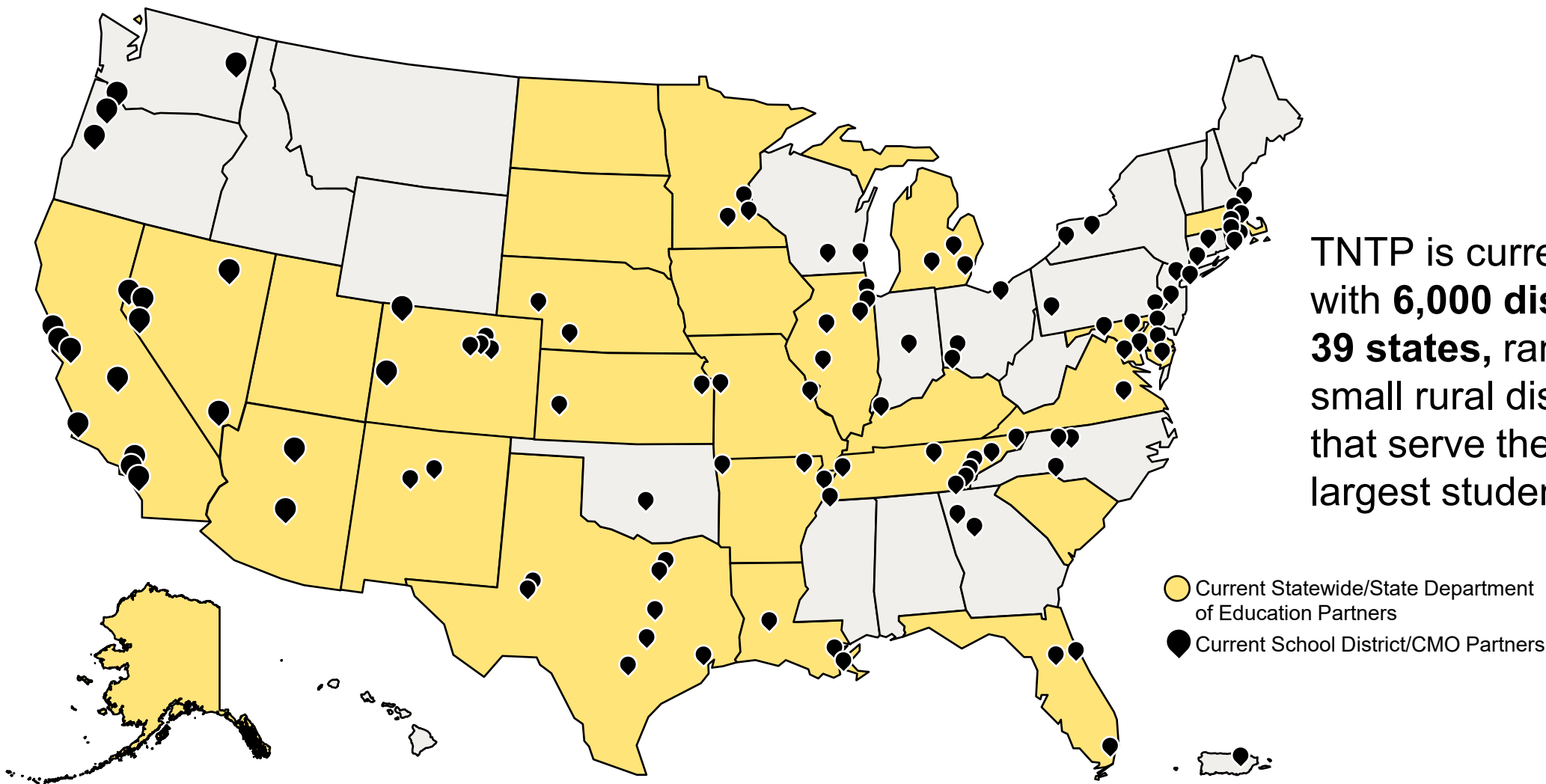




David Nungaray
TNTP

Bilingual Consulting Partner

Supporting PK–12 public education nationally

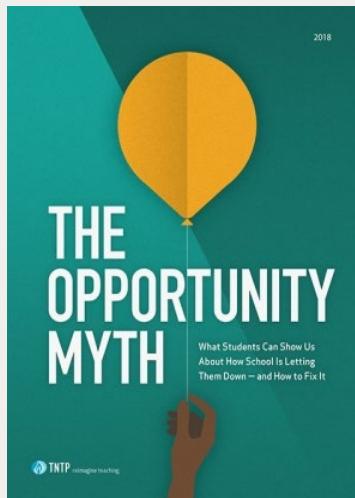


TNTP is currently partnering with **6,000 districts** across **39 states**, ranging from small rural districts to those that serve the nation's largest student populations.

OUR RESEARCH

How do we create academic, economic, and social mobility at scale?

**School is not preparing most
young people for thriving
lives**



2018

**For young people to thrive,
they need access to the five
factors of mobility**

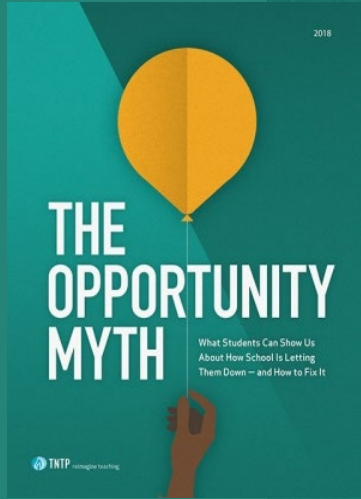


2024

**How to build a strong
academic foundation (the
first mobility factor)**



2024



But most students get those chances far too infrequently.
We found four key resources that influence a student's school
experience and outcomes.

1 Consistent opportunities
to work on
**GRADE-APPROPRIATE
ASSIGNMENTS**

2 **STRONG INSTRUCTION,**
where students do
most of the thinking
in a lesson

3 **DEEP ENGAGEMENT**
in what they're
learning

4 Teachers who hold
HIGH EXPECTATIONS
for students and
believe they can
meet grade-level
standards

Unfortunately, these resources are few and far between for most students
—and *particularly* for students of color, those from low-income families,
English language learners, and students with mild to moderate disabilities.

Unlocking Learning Acceleration for Multilingual Learners



Case Study Educator Experience, Selection, Support, and Collaboration

Tulsa Public Schools' Development of Culturally and Linguistically Representative Educators

Tulsa Public Schools, Oklahoma



33,873 students,
36% Multilingual Learners (including both current and former MLs)³⁶



78 schools (including "charter partners")³⁷



Planned Intervention

Tulsa Teacher Corps—Recruit and support diverse, multilingual educators prepared to teach multilingual learners



Initiative's Funding Source

Philanthropic support

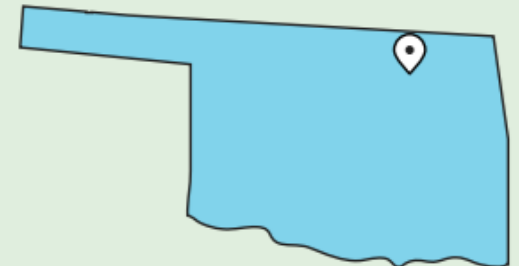


Oklahoma's Multilingual Learner Population

60,282 MLs or **9.3%** of the total student population in 2020, an increase from 2010 when MLs totaled **41,812** or **6.6%**³⁸

Percentage of grade 4 students scoring at or above Proficient in Oklahoma, according to the NAEP 2022 Reading Assessment³⁹

ML: **9%** vs. Not ML: **26%**



Turn & Talk

The Teachers Who Shaped Us

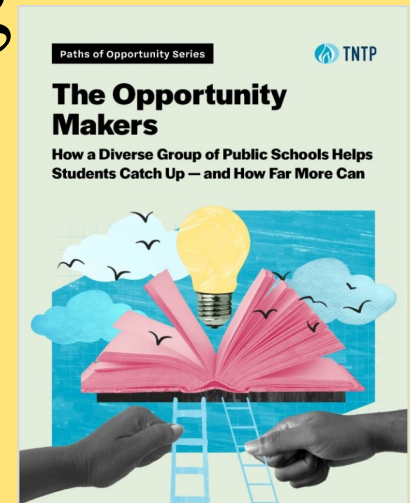
- Who was your favorite teacher?
What grade did they teach?
- How did the teacher feel about you?
How could you tell?
- How did the teacher make you feel?
- What did the teacher do to make
you feel that way?

The Classrooms We Remember

- What is the most memorable
classroom from your schooling days
(positive or negative?) What grade
were you in?
- How did you feel in that space?
- What do you remember about how it
looked, sounded, or smelled?
- Who was there with you?
- What do you remember doing in that
space?

5 min independent reflection
5 min table or partner talk
5 min whole group share

How can schools create
a strong academic
foundation for all young
people?

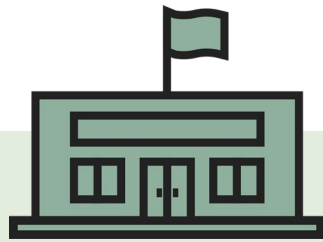


The Opportunity Makers

How a Diverse Group of Public
Schools Help Students Catch
Up —and How Far More Can

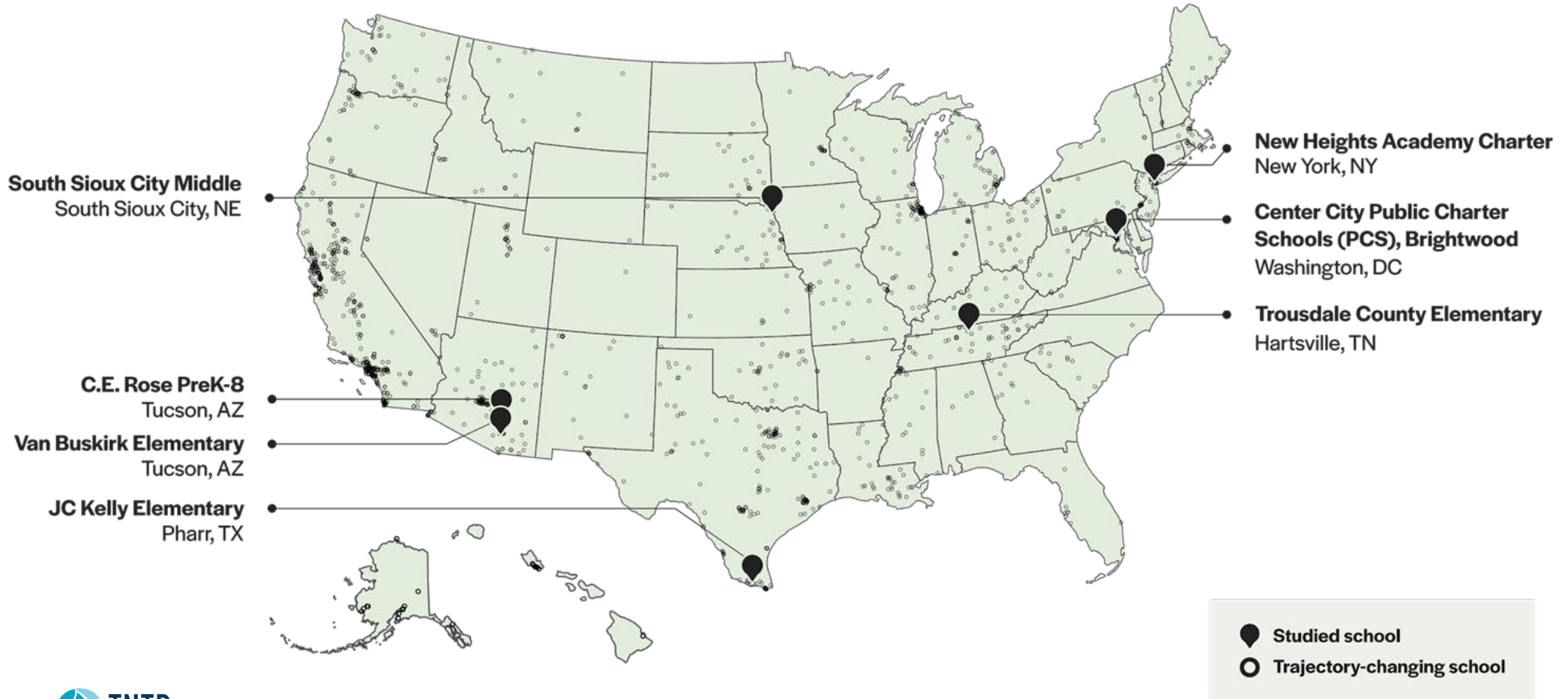


We can learn from the schools where
students consistently catch up.



Trajectory-Changing Schools:
Schools where the average student was **not yet on grade level**
***and* grew more than 1.3 relative grade levels each year,**
based on the Stanford Education Data Archive.

We studied seven trajectory-changing schools in depth.

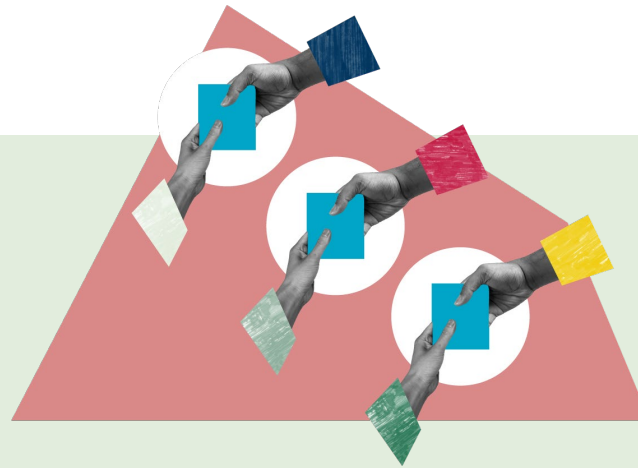


Trajectory-changing schools do three things well.



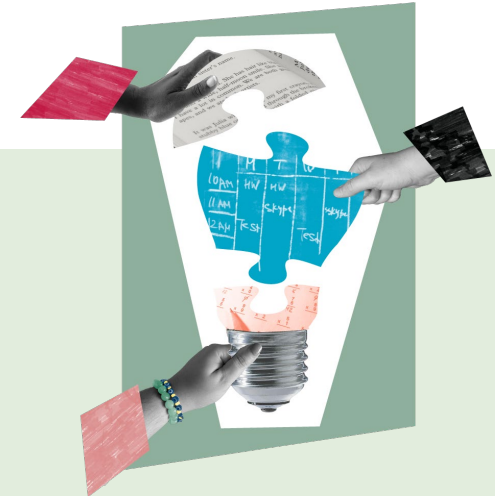
Belonging

Schools create an emotional climate for learning that activates students' ability to excel.



Consistency

Schools deliver consistently good teaching and grade-level content for all students.



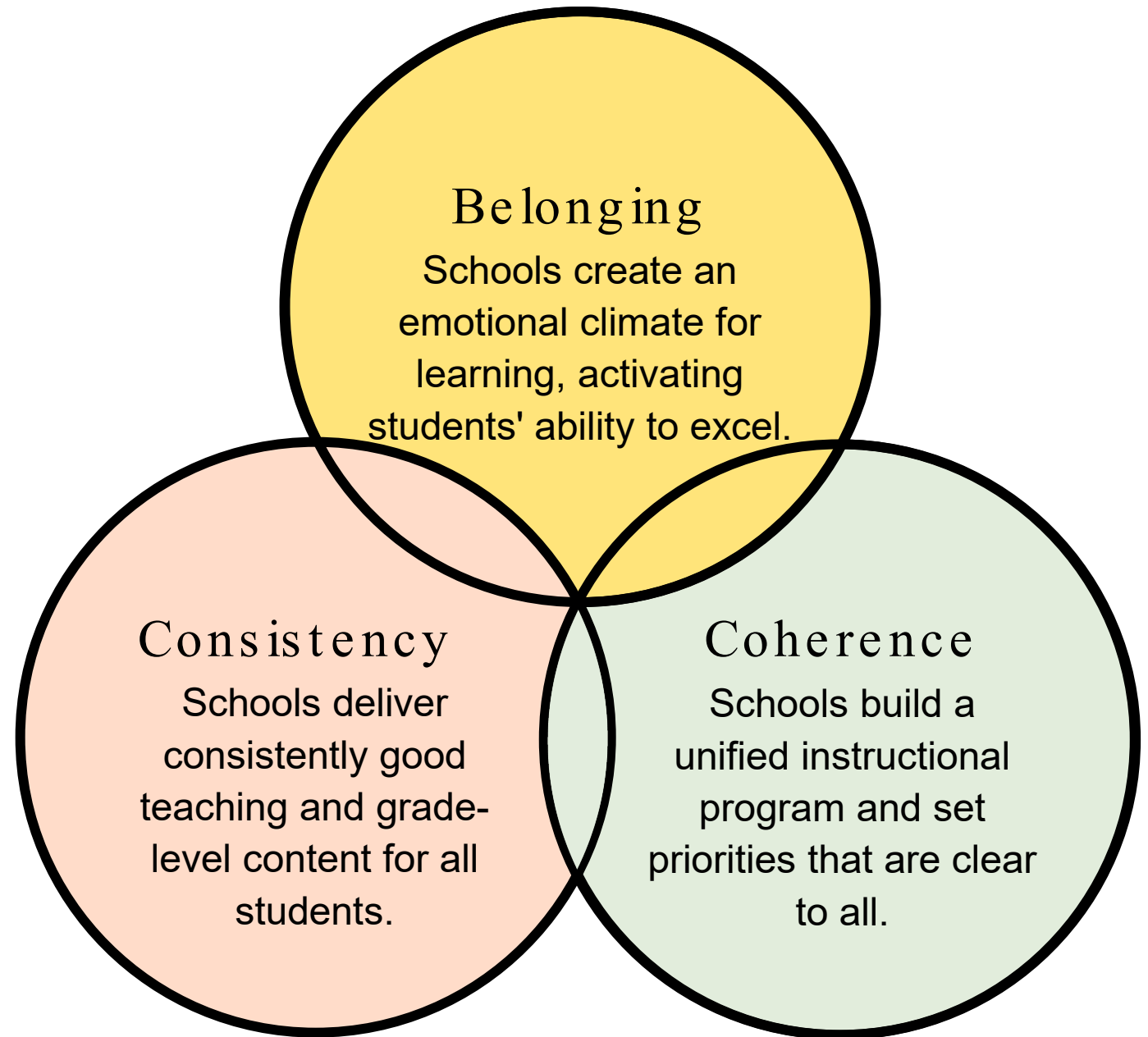
Coherence

Schools build a unified instructional program and set priorities that are clear to all.

The three focus areas intersect and reinforce each other.

Reflecting on the three focus areas:

1. Which focus area(s) are already appearing in your school?
2. Which focus area(s) do you see as an opportunity for growth?
3. Do MLs have equal access to all focus areas?



Every school can become a trajectory-changing school.

1

Create a supportive ecosystem. Align policies, priorities, and resources to support the focus areas.

2

Reorient to the student experience. Anchor all decisions in the student experience.

3

Choose a narrow entry point. Focus on belonging, consistency, or coherence for targeted practice.

4

Manage ongoing change. Catalyze and sustain change over multiple years.

Shared Resources



Let's Stay Connected!



Gracias.
Thank you.